



Campus Drive

Kingsthorpe, Northampton

oriordanbond
SALES & LETTINGS



Campus Drive

Kingsthorpe
NN2 7FN

Offers Over
£330,000

A modern three bedroom detached family home, situated in the popular Scholars Green development, located in the heart of Kingsthorpe. The property is within walking distance to local schools and amenities and a short drive to Northampton town centre and train station.

The accommodation comprises entrance hall, cloakroom/WC, sitting room, open plan kitchen/dining room with fitted appliances and separate utility room. From the first floor landing is a three-piece family bathroom and three generous size bedrooms with the master bedroom benefitting from shower en-suite. Outside is a private rear garden with patio area leading to laid to lawn. To the front of the property is a driveway providing off road parking for several vehicles leading to a detached single garage. Further benefits include uPVC double glazing and gas radiator heating (A/905/M)

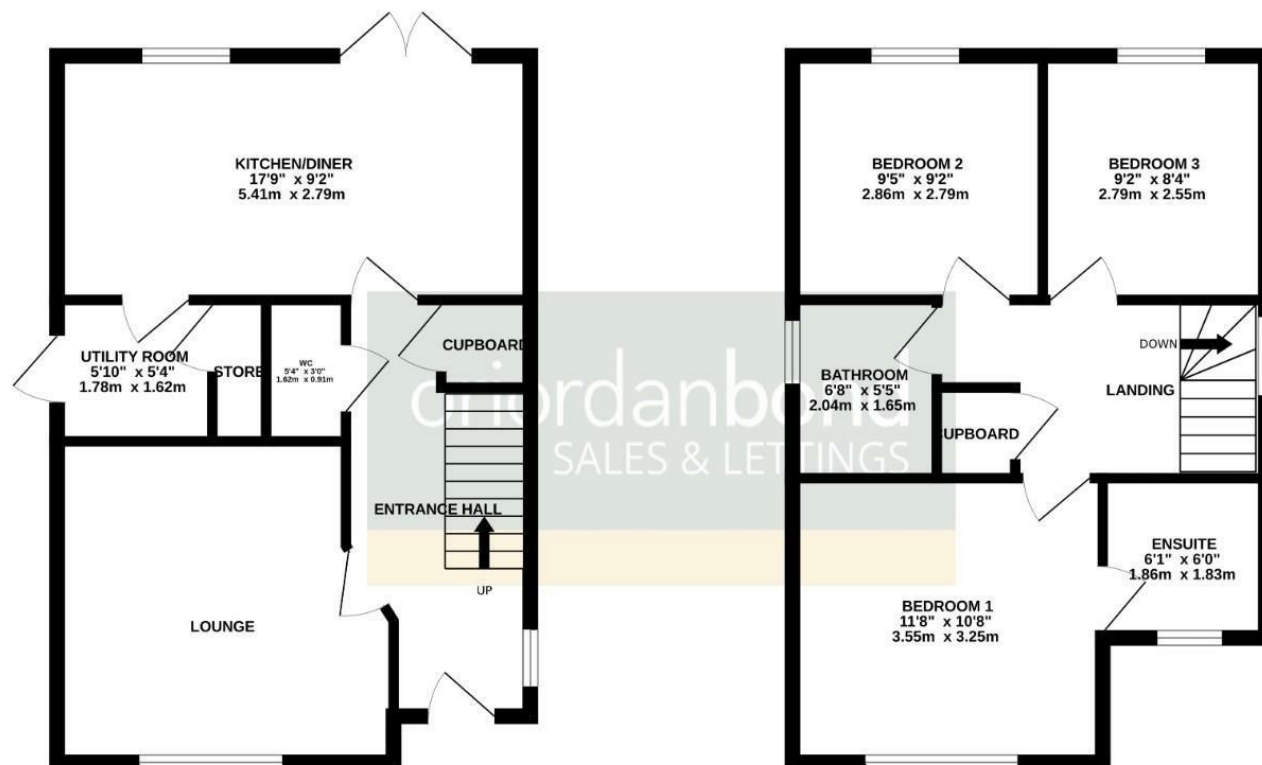
- Three bedroom detached home
- En-suite to master bedroom
- Open plan kitchen/dining room with appliances
- Gas radiator heating
- Enclosed rear garden
- Off road parking and detached garage





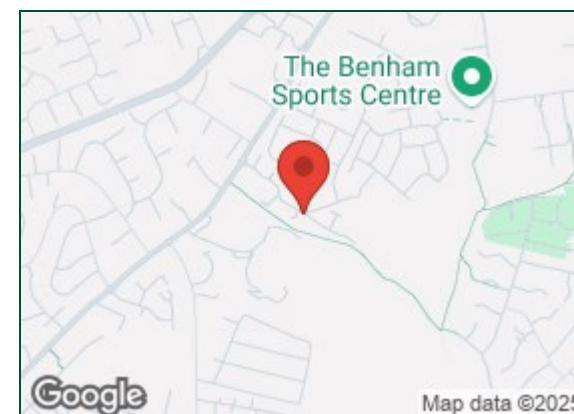
GROUND FLOOR
462 sq.ft. (42.9 sq.m.) approx.

1ST FLOOR
443 sq.ft. (41.1 sq.m.) approx.



TOTAL FLOOR AREA : 905 sq.ft. (84.1 sq.m.) approx.

Whilst every attempt has been made to ensure the accuracy of the floorplan contained here, measurements of doors, windows, rooms and any other items are approximate and no responsibility is taken for any error, omission or mis-statement. This plan is for illustrative purposes only and should be used as such by any prospective purchaser. The services, systems and appliances shown have not been tested and no guarantee as to their operability or efficiency can be given.
Made with Metropix ©2024



Additional information

- Council Tax Band: D
- Energy Efficiency Rating: B

Viewing

Viewing strictly by appointment – details below

Disclaimer

O'Riordan Bond Estate Agents Limited has not tested apparatus, equipment, fittings or services and so cannot verify they are in working order. The buyer is advised to obtain verification from their solicitor or surveyor.

O'Riordan Bond Kingsthorpe Sales
01604 722007

kingsthorpe@oriordanbond.co.uk

